

PROPELLER BALANCING



Using a well balanced propeller is very important for the duration of your engine.
We offer a very simple tool to check and correct the balancing of your propeller.



It's made of 3 pieces, a ruler, a hub and a central pin

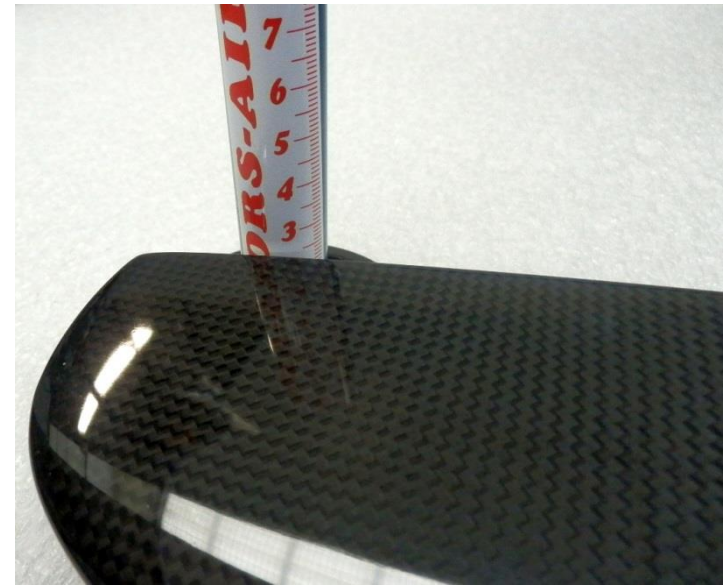
Positioned on a flat and stable surface, insert the hub in the propeller, placing in on the central pin.



Now the propeller will keep its balance



Check at which height the first tip of the propeller arrives, then rotate the propeller on the central pin without moving the ruler and check the height of the second tip



If you find a different height for the two tips, it means that the propeller is unbalanced, so spray on the lighter tip (the one that stays higher) some transparent paint, until they reach the same height